

NI ALIGNMENT CONTROLS

**NI Lindsay Type Tower Control Boxes**

**NIL Type Tower Control Boxes**

Includes Complete Control Box.  
(No linkage, mounts, or overload protection.)

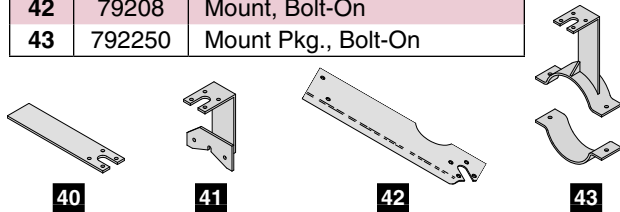
NIL Type Tower Control Boxes	
NI Part #	Description
22056	Box, Control, Intermediate
22057	Box, Control, Stall
22058	Box, Control, Last Tower
22061	Box, Control, Booster*, w/ Pressure Switch
22054	Box, Control, Booster*, w/o pressure switch

\* See the next page for more details on the NIL booster pump control boxes.

**Options:**

- Mounting hardware and actuator, bolt-on or weld-on.
- Overload relay protection (wide range of sizes for motors of different horsepower).

NIL Tower Box Mounts		
Item	NI Part #	Description
40	79209	Mount, Weld-On
41	79201	Mount, Bolt-On
42	79208	Mount, Bolt-On
43	792250	Mount Pkg., Bolt-On



NIL Stall Timer Tower Box 22057



NIL Intermediate Tower Box 22056

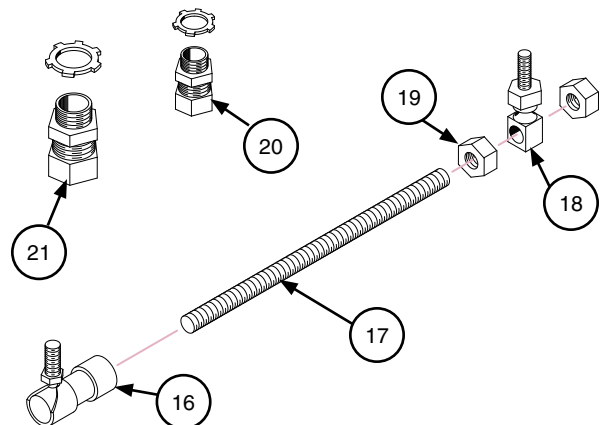


NIL Last Tower Box 22058

**NIL controls & parts can be used as direct replacements for Lindsay style boxes.**

**Linkage for NIL Type Boxes**

Item	NI Part#	Inter.	Stall	Last	Description
16	71002	1	1	--	Joint, Ball, Quick Disconnect
17	89906	1	1	--	Rod, Linkage, 6", short
-	89934	1	1	--	Rod, Linkage, 10"
-	89904	1	1	--	Rod, Linkage, 13"
-	89900	1	1	--	Rod, Linkage, 16"
-	89937	1	1	--	Rod, Linkage, 24"
18	71001	1	1	--	Joint, Swivel, Adjuster, 1/2" Stem
-	71001-L	1	1	--	Joint, Swivel, Adjuster, 3/4" Stem
19	82010	2	2	--	Nut, Hex, 5/16" NF
-	82000	2	2	--	Nut, Hex, 1/4" NF
20	39006	1	1	1	Connector, Cord, 1/2", w/ Jam Nut
-	39052	2	2	1	Connector, Cord, 3/4", w/ Jam Nut
-	792XX				Mount, Actuator Arm



**Note:** For a complete parts breakdown of the NIL type tower control boxes, see the parts listings in Section I: Parts Breakdowns, page 161.