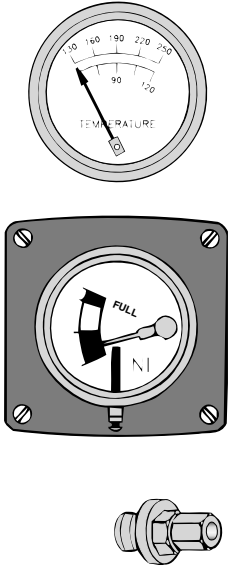


ENGINE CONTROLS

Temperature Gauges



- 2" (51 mm) dial.
- For coolant or oil temperature up to 440° F (220° C).

NI Part #	Description
93624	Switch Gauge, Cylinder Head Temperature, 320° F dial, 1.5"/38 mm bulb for air-cooled engines
936126	Switch Gauge, Water-Cooled Engines, 130 - 250° F / 60 - 120° C, with screw terminal connection
936125	Switch Gauge, Coolant Level

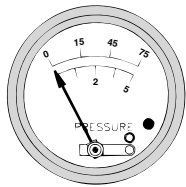
Other options and ranges are available — Please call with your needs

Blind hole radiator fitting for coolant level switch gauges.
5/8" expandable fitting for thin wall radiators.

NI Part #	Description
53023	Fitting, Blind Hole, for 1/4" tubing

Call our sales office for other sizes and for diesel fuel or oil applications.

Pressure Gauges

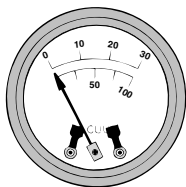


E

- 2" or 2-1/2" dials.
- Thru 400 psi (2.76 MPa).
- For oil, water, air, and fuel.

NI Part #	Description
93690	Switch Gauge, Pressure, 2-1/2" dial, 0-75 psi
93694	Switch Gauge, Pressure, 2" dial, 0-75 psi, with front, semi-automatic lockout
93689	Switch Gauge, Pressure, 2" dial, 0-100 psi, both high & low front contacts
936127	Switch Gauge, Oil Pressure, Gas Engine, 2" dial, 0-75 psi, with screw terminal connection
936128	Switch Gauge, Pump Pressure, 2" dial, 0-150 psi, high & low contacts

Vacuum Gauges

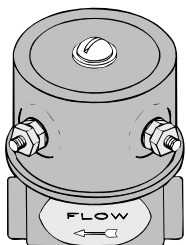


- 2 in (51 mm) dial.
- High and low limit contacts.

NI Part #	Description
93650	Switch Gauge, Vacuum, 0-20"Hg/0-70 kPa
93654	Switch Gauge, Vacuum, 0-30"Hg/0-100 kPa
936129	Switch, Toggle, for 93654 (above)

For other options and ranges — call our sales office

Fuel Shutoff Valves for Diesel Engines



- Normally closed valve operates on 12 volts DC.
- 1/4" NPTF inlet and outlet with 3/16" port opening.

NI Part #	Description
966107	Valve, Solenoid, Diesel Engine

Also available in 24VDC & 32VDC models and with special 1/4" port opening.