

GEARBOX ACCESSORIES

Towable Conversion Kits and Components

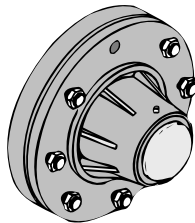
- Converts standard drive to towable drive.
- Adjustable bearing locknut eliminates shims.
- Cross drilled pin easily stows while towing.
- Unique triple-lip spindle seal design.
- High carbon steel tow pin and bracket will not bend under load.
- Relief plug protects from over-greasing.
- Large bearings for improved load capacity.
- Easy repairability with bolt-on dust cover.
- PTO clip-pin with tab is easy to remove.
- Pin and bracket usable on all towable gearboxes and conversion kits.
- Anti-corrosion zinc plated pin.



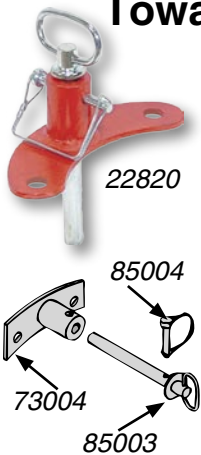
Towable Gearbox Hubs

For converting non-towable gearboxes to towable

| NI Part # | Description |
|-----------|--|
| 68010 | Hub, Towable, Bolt-on, w/ studs (does not include bracket and pin, sold separately, P/N 22820) |

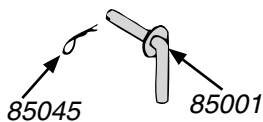


Towable Gearbox Brackets



| NI Part # | Description |
|-----------|---|
| 22820 | Bracket, Towable, Gearbox, pkg. (w/ long pin) |
| 73004 | Latch Weldment, Tow Pin (latch only) |
| 85004 | Pin, Latch (small) |
| 85003 | Pin, Tow, Gearbox (long) |

Gearbox Tow Pins



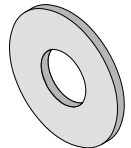
| NI Part # | Description |
|-----------|-------------------|
| 85001 | Pin, Tow, Gearbox |
| 85045 | Clip, Bridge, Pin |

Gearbox Flanges, Reinforcement Rings, and Lug Bolts



54003WS

| NI Part # | Description |
|-----------|--|
| 54003WS | Flange, Gearbox Output, weld-on, w/ 2" bore, w/ 8 studs |
| 54043WS | Flange, Gearbox Output, weld-on, w/ 2 1/4" bore, w/ 8 studs |
| 54002 | Flange, Gearbox Output, weld-on, Reinforcement Ring, 2" bore |
| 54043 | Flange, Gearbox Output, weld-on, Reinforcement Ring, 2 1/4" bore |
| 20004 | Lug Bolt, 9/16" x 1.31" long |
| 20005 | Lug Bolt, 9/16" x 1.69" long |
| 20008 | Lug Bolt, 5/8" x 1.44" long |
| 200140 | Lug Bolt, 2" long |
| 20087 | Stud, Press-In, 1/2" |
| 20002 | Stud, Press-In, 9/16" x 1-5/8" |
| 20002-1 | Stud, Press-In, 9/16" x 2-1/8" |
| 82011 | Nut, Lug, 1/2" |
| 82002 | Nut, Lug, 9/16" |
| 82053 | Nut, Lug, 5/8" |



54002

Gearbox Lube

High Grade 85/140 for heavy duty applications. Available in containers of 2.5 gal. or 55 gal. drum.

| NI Part # | Description |
|-----------|--------------------------------|
| 82500-2.5 | Gearbox Lube, 85/140, 2.5 gal. |
| 82505-2.5 | Gearbox Lube, 80W/90, 2.5 gal. |

Expansion Chamber

| NI Part # | Description |
|-----------|---|
| 32002 | Expansion Chamber, Round, w/ built-in diaphragm |



Shaft Protector

| NI Part # | Description |
|-----------|--|
| 90614 | Shaft Protector, for either round or square bolt-on input caps |

