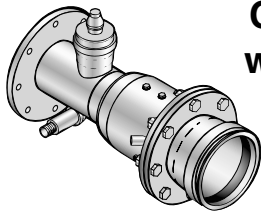


CHEMIGATION



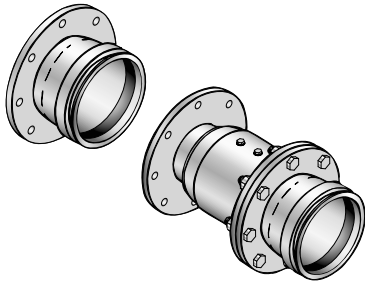
Chemigation Valve w/ Flanged Adapter

See below for listing of flanged adapters.

Call for more information.

Flanged Adapters – Steel

NI Part #	Size
11034	6" x 4"
11035	6" x 6"
11036	6" x 8"
11037	8" x 6"
11038	8" x 8"
11039	10" x 8"
11040	10" x 10"

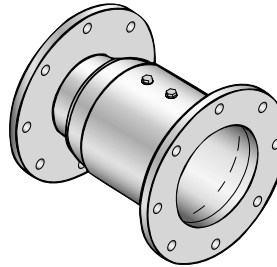


Check valve with flanged ends and flanged adapter

Check Valves

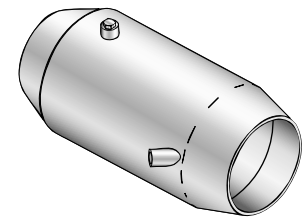
Check Valves w/ Flanged Ends

NI Part #	Size
966255	4"
966257	6"
966259	8"
966261	10"
966263	12"



Check Valves w/ Plain Ends

NI Part #		Size
Black	Galvanized	
966250	96661	4"
966251	96662	6"
966252	96660	8"
966253	96663	10"

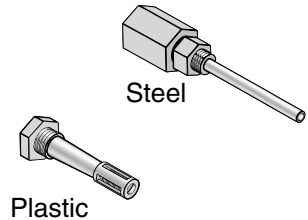


Bolt Packages for Chemigation Valves

NI Part #	Quantity		Description
	6"-8"	10"-12"	
200131	8	12	3/4" x 2-1/4" Bolt, Gr. 5
82070	8	12	3/4" Std. Nut
972119	8	12	3/4" Lock Washer

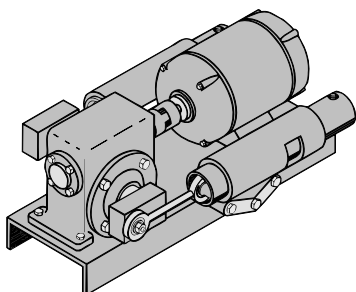
Chemical Injection Check Valves

NI Part #	Description
96645	Plastic, 3/4"
96645s	Steel, 3/4"



Chemigation Pumps

- Save fertilizer, time, labor, fuel and machinery.
- Designed for agricultural use.
- Stainless steel wettable parts resist corrosion.
- Accurate metering assures you best results.



Chemigation Pump Selection Chart					
NI Part Number		Flow GPH	Pistons		
Single Phase 110/220V 1/3 HP	Three Phase 220/440V 1/3 HP		#	Size	
895114*	895115*	3 – 30	1	1 1/4	
895116	895117	3 – 30	1	7/8	
895118	895119	3 – 60	2	7/8	
895120	895121	5.7 – 57	1	1 1/4	
895122	895123	5.7 – 114	2	1 1/4	

* Includes hose kit #1.

Also available are pumps with power sources of: Belt Drive, Honda Engine, 12V DC, 90V DC, and Hydraulic.

Hose Kits for Chemigation Pumps	
NI Part #	Description
660106	Complete Hose Kit #1
660107	Complete Hose Kit #2

Hose Kit #1 includes all polypropylene fittings, clamps, inline strainer with ball valve, suction and discharge tubing EVA, and waterline check valve for stainless steel pumps, poly injection line check valve on poly pumps.

Hose Kit #2 includes the same items as #1 except substitute MAX-94 injection line check valve all stainless steel body and bushing. Available for certain models. This option not recommended for acid applications.



Other sizes and models are available. Please call NI sales office for more information.